

The Business Page

Information & News for PLYMOUTH TOWNSHIP businesses



Fall-Winter 2001

Important Phone Numbers:

General Township Government
453-3840

Steve Mann,
Supervisor
354-3201

Marilyn Massengill,
Clerk
354-3224

Ron Edwards,
Treasurer
354-3214

Trustees:
Kay Arnold
455-2683

Charles Curmi
455-9658

Ron Griffith
455-1083

Abe Munfakh
459-7547

Police, Fire, EMS
Emergencies 911
Police non-emergency
354-3249

Building Dept.
354-3208

Public Services
453-8131

Sheldon Road underpass project postponed until June 2002



Officials from Plymouth Township and the city of Plymouth have been informed by Wayne County that the Sheldon Road underpass project which had been scheduled to begin in

December of this year has been postponed. Representatives from the County indicated that the massive project still presented some challenges to the design team and they are continuing to work to form the necessary partnerships to insure the project's successful completion.

The City and Township were informed that the current timeline for the project shows construction starting in June of 2002. The entire project is anticipated to take nearly two years from start of construction to completion. Sheldon Road will be CLOSED at the railroad tracks for the entire construction period. Other County projects on tap for the area include the following:

?? Sheldon Road from Ann Arbor Trail north to the CSX Railroad will be repaved in the Summer of 2002.

- ?? Ann Arbor Road from General Drive to Newburgh will be repaved in 2002.
- ?? Beck Road from M-14 north to Six Mile Road will be widened to five lanes in 2002.
- ?? Sheldon Road from Joy Road north to Ann Arbor Trail is scheduled for paving work in Summer of 2003.

The current reconstruction of the Haggerty Road bridge north of Edward Hines Drive, which had been scheduled to end in August, is expected to be completed during November, 2001.

Keep up to date on the Sheldon Road underpass and other Wayne County Road Projects by logging onto the Wayne County website at www.waynecounty.com, then click on Departments, then Roads. This website provides a daily "news flash" of construction information.

Threats of bio-terrorism cause concern

The current atmosphere of public anxiety regarding further terrorist attacks has made people hypersensitive. Public safety agencies have been overburdened responding to calls that lack any credible threat of bio-terrorism.

In an effort to keep the public informed, the Plymouth Township Police Department offers some guidelines. Lt. Bob Smith says that suspicious packages or substances should be reported to the Plymouth Community Communications Center at **354-3249**. Responding personnel will screen and assess the situation to determine what course of action should be taken.

The Department's Community Resource Officer, Jamie Senkbeil, suggests that persons wanting more information should read the enclosed fact list, recently issued by the United States Postal Service. It contains questions and answers about hazardous materials and specifically anthrax. Further information is available on their website, www.usps.com.

While the Plymouth Police and Community Fire Departments are prepared to respond to hazardous materials situations they do not expect any bio-terrorism incidences to occur.

Tips for keeping your business Rouge friendly

If you own a business in Plymouth Township, your actions directly affect the Rouge River. Plymouth Township is located within the Rouge River watershed and any material that enters the storm drains is deposited in the river and directly affects the water quality of, not only the Rouge River, but the Detroit River and Lake Erie. Below are some ideas for keeping your business Rouge friendly. Please remember that protecting our rivers is everyone's responsibility.

Actions affecting the Rouge

Tips to prevent pollution

Preventing entry into storm drains.

Never pour any wastes (including floor wash water) down a storm drain. Clean up spills and leaks (liquid or solid) immediately to prevent them from washing into a storm drain.

Identifying and controlling wastewater discharges.

Ensure that sinks and floor drains are connected to the sanitary sewer. If possible, seal all floor drains to prevent an accidental discharge.

Cleaning paved surfaces.

Use a broom, vacuum, mechanical sweeper and/or mop to clean parking lots and paved areas around your facility instead of hosing down these areas.

Cleaning up spills and leaks.

Use drain mats or plugs to prevent spilled fluids from entering sanitary and storm drains. Clean up spills immediately to prevent them from washing into a storm drain.

Storing and handling inventory.

Store inventory indoors. If you must store materials indoors, keep the materials off the ground and protected from the weather.

Storing and disposing wastes.

Never mix waste types. Place all waste in containers that are clearly labeled, durable and compatible with the waste. Waste storage areas should not be exposed to rain water.

Cleaning equipment and parts.

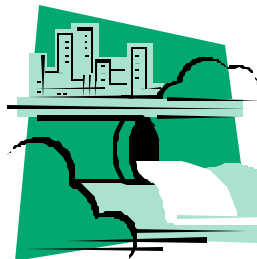
Clean parts in a self-contained unit, solvent sink or parts washer to prevent solvents and grease from entering a sewer or storm drain connection. Clean food service equipment (floor mats, garbage cans, carts or trays) in a designated indoor area such as a mop or pot sink.

Dumpster and loading dock maintenance.

Keep dumpster lid closed to keep out rainwater. Keep litter from accumulating around the loading dock area.

Employee training/education.

Post instructional/informational signs around your shop as reminders for customers and employees.



Information provided by The Rouge River National Wet Weather Demonstration Project. For more information on preventing pollution in the Rouge River call 734-453-8131, ext. 33.